

www.comegmedical.com

Reference document: Non contractual document - Ref. 707219B - 09/2019 - Copyright © 2019 SOPRO. All rights reserved.
No information or part of this document may be reproduced or transmitted in any form without the prior permission of SOPRO.



DUO
Full HD

INTUITIVE
CONNECTION



COMEG Medical Technologies is the Medical Division of the Acteon Group.

- Over **40 years of experience** in surgical field
- Focus specifically in **Minimally Invasive Surgery (MIS)**
- Global presence on **6 continents**
- **Meeting the specific needs** for GYN, URO, ENT, LAP, ARTHRO, CMF and PLASTIC surgery
- **Intuitively connecting physicians** with the appropriate solutions

COMEG designs intuitive solutions for minimally invasive surgeries.

COMEG
medical technologies

www.comegmedical.com
Manufacturer / Fabricant : SOPRO SA
ZAC Athélia IV - Av. des Genèvevriers
13705 La Ciotat cedex - France
info@comegmedical.com

COMEG
medical technologies

DUO FULL HD, THE INTUITIVE SOLUTION FOR YOUR DAILY PRACTICE



DUO
Full HD

2-in-1
device: camera
and light source

3
programmed
buttons

Less than
1m²
floor space used
with trolley

LED lifetime
up to
50 000
hours

1920 x 1080 p
Full HD resolution



• A UNIQUE COMBINED SOLUTION FOR EFFECTIVE TREATMENT

FULL HD CAMERA

The work quality is closely linked to the ability to discern the smallest details. Having control of these details makes the difference!

The Full HD resolution, provides accurate images to ensure a reliable treatment.

LED LIGHT SOURCE

Good quality of light is essential for any endoscopic act, this is why it is important to allow the practitioner to adapt the parameters according to his requirements and the type of treatment.



• OUTSTANDING COMFORT FOR YOU & YOUR PATIENTS

3 REASONS TO USE DUO FULL HD

Intended for both the consulting and the operating room, DUO Full HD is a system offering a multi-disciplinary use, taking the first step between **consultation** and the **surgical act**.

This **2-in-1 solution** combines the control unit of a **Full HD camera** and a powerful **led light source**. An all-in-one convenient by its use, but also, by its small size, allowing to have a clean workplace.

ENLARGE YOUR PERSPECTIVES

PRE
OPERATIVE

Choose DUO Full HD
for your **diagnosis**

INTRA
OPERATIVE

Match performance & simplicity
during your **surgery**

POST
OPERATIVE

Your patient is your priority
during **post-operative controls**

- **High quality images** procure a valuable support in making decision for a good therapy.
- Private office consultation probably offers **less painful care** to patients by reducing the stress related to operating room.
- Bringing the device into the operating room **enlarges your field of possibilities**, allows you to go further than the simple consultations by making the shift to small surgeries.



DUO
Full HD

• WORK SMARTER, WORK FASTER

DUO
Full HD IS SO INTUITIVE,
THAT IT HAS NEVER BEEN
SO EASY TO PERFORM
CLINICAL ACTS

SO ATTRACTIVE
WITH ITS COMPACT & MODERN DESIGN

Created with cutting edge technology and design, the DUO Full HD, thanks to this compact size and elegant design, fits perfectly in all environment, both in consultation or operating room.

SO SIMPLE
WITH ITS GRAPHICAL INTERFACE

Thanks to its recognizable icons, your workflow has never been so smooth and efficient. The colored touchscreen provides intuitive navigation for fluid and easy use.

SO CONNECTED
TO SAVE YOUR PHOTOS!

Save your photos during a patient's treatment and share it in various scientific contexts such as conferences, congresses and university courses, or simply to implement the patient file.

With its USB port, connect your USB stick and take some pictures directly from the camera head!



Complete,
Intuitive

• EXTEND YOUR WORKPLACE FROM PRIVATE OFFICE TO OPERATING ROOM

Using the DUO in private office allows you to perform some various **diagnosis acts**, in different applications, but bringing the system into the operating room **enlarges your field of possibilities**.

In either case, the DUO Full HD always allows you to have a **friendly work environment**, used on a table or on a cart.



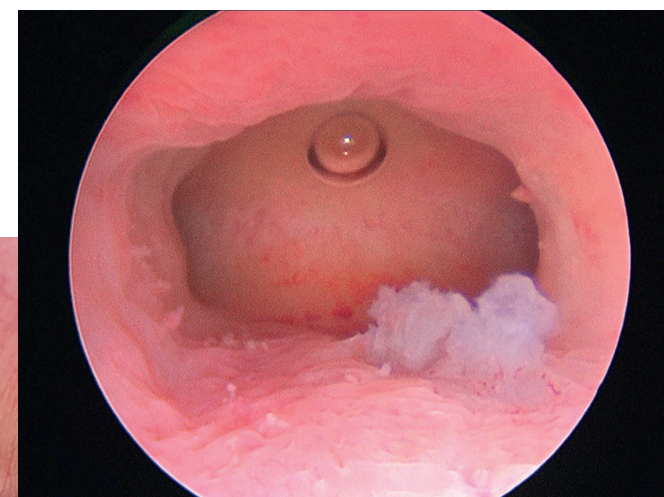
Ubicart, the mobile consultation cart, together with its monitor, will perfectly meet your needs for all treatments.

- LG 27" Full HD monitor: **Ref. S_700794**
- Ubicart 1m: **Ref. S_700362**
Ubicart 1m with transformer: **Ref. S_700418**
- Ubicart 1m50: **Ref. S_700791**
Ubicart 1m50 with transformer: **Ref. S_700793**

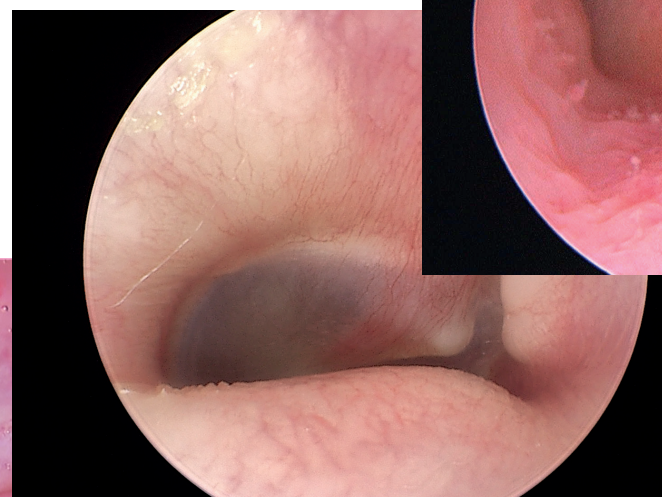
- PERFECTLY ADAPTED
TO VARIOUS CLINICAL APPLICATIONS

HIGH-QUALITY IMAGES

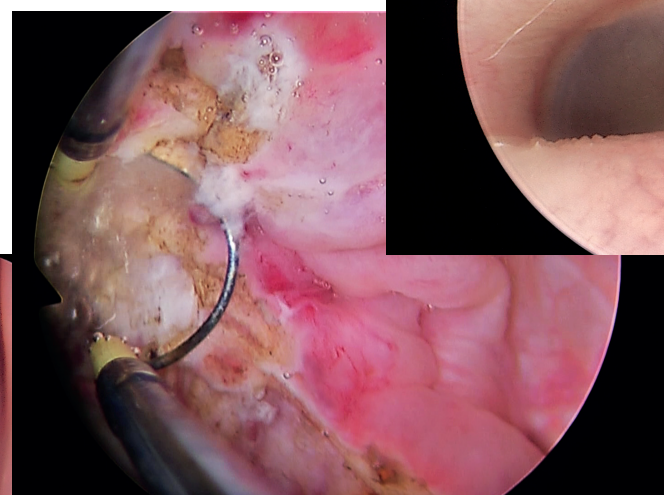
DUO Full HD provides accurate images to ensure a good treatment quality.



Hysteroscopy



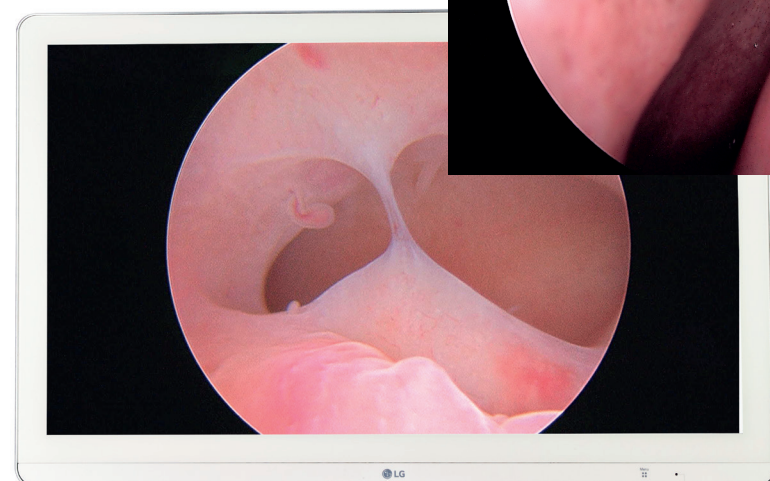
Otology



Urology



Sinuscopy



TIME SAVING &
INSTANT RESULTS



Consultation,
Surgery

• MAKE IT EASY!

EASY TO CONNECT FAST ASSEMBLY SYSTEM



Connect easily
your camera head



Camera head is compatible
with all C-mount couplers

EASY TO USE FOCUS ON PATIENT

During diagnosis/intervention, it is essential to stay focused on your actions and on your patient. All parameters can be adjusted and memorized once for all, and all essential functions are accessible from the camera head.

Adapt your parameters from the control unit:

- Light intensity,
- Brightness,
- Details,
- Red or blue gain,
- Red phase,
- Color,
- Gain.

Control your system from the camera head:



* Programmable with LED -/+ or Zoom -/+

• TECHNICAL SPECIFICATIONS

SPECIFICATION OF THE CONTROL UNIT

- Automatic white balance
- Video outputs:
 - 1 HDMI
 - 1 HD-SDI/3G-SDI
 - 1 USB 3.0 micro B
- Recommended USB stick format: FAT32
- Compatible with Storz® and Olympus® type light cables
- Electronic iris shutter
- Automatic thermal protection system
- Light intensity equivalent to 180 Watts Xenon light source
- Manual adjustment of the light intensity
- Anti-blinding feature with light cable detection
- LED technology
- LED lifetime up to 50 000 hours
- Color temperature: 5 000 K
- Brightness, details, red and blue gains, color adjustments
- Gain: Off / Low / High
- On screen displayed adjustments
- "SAVE" function to memorize the settings
- "RESET" function to restore to the factory settings
- Digital zoom up to 2.5x
- Full HD Images recorder integrated (USB) / Format .tiff
- Touchscreen with intuitive interface
- 17 languages
- Dimensions (W x H x D): 260 x 100 x 215mm
- Weight: 1900 g
- Protection type: IPX0 (not drip-proof)
- Power supply: 100 - 240 VAC / 50 - 60 Hz
- Power consumption: 85-95 VA
- Two T 1,6 A - 250 V fuses (Marked UL/CSA only)
- Continuous service

Art. N°	Description
S_195_9000	S195 DUO Full HD CCU - EU
S_195_9001	S195 DUO Full HD CCU - US

SPECIFICATION OF THE CAMERA HEAD

- 1CMOS Exmor R™ technology 1/2" Full HD sensor
- 2 Programmable buttons
- Automatic electronic shutter (1/50 to 1/100 000)
- Resolution: 1920 x 1080 p
- Definition: 1080 lines
- Active pixels area: 1920 x 1080
- Cable length: 2,99 meters
- Dimensions (D x H): 130 x 47mm
- Weight (camera only): 152 g
- Protection type: IPX7 (waterproof)

Art. N°	Description
S_195_8000	S195 DUO Full HD Camera Head - without coupler

SPECIFICATION OF THE COUPLER

- 24mm HD coupler
- C-mount, scope holder with locking mechanism
- Weight: 87g
- Protection type: IPX7 (waterproof)

Art. N°	Description
S_024_0001	24mm HD coupler

REGULATORY & ENVIRONMENT

- Electrical safety: Class 1 device, CF type applied parts
- Operating temperature: +10°C / +40°C
- Transport temperature: -10°C / +45°C
- Storage temperature: +10°C / +40°C
- Operating, storage and transport atmospheric pressure: 700 hPa to 1060 hPa
- Compliant with European directive 93/42/EEC - Class I
- Compliant with international standards IEC 60601-1; IEC 60601-2-18; IEC 60601-1-2; IEC60601-1-6 and NF EN ISO 15223-1
- IEC 62471: risk group 2
- Not suitable for use in presence of flammable gaz. Recommendation of use in an operating room in accordance with applicable regulations

DUO KIT DELIVERED WITH : EU: S_K19_1000 US: S_K19_1001

- 1 Camera control unit,
- 1 Camera head,
- 1 24mm coupler,
- 1 Light cable (with Storz® adaptor)

Technical
Specifications